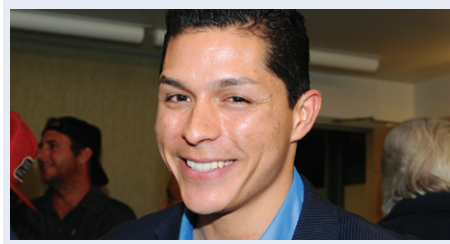




Pepperdine students collaborate with the Emily Shane Foundation.
Malibu Life: B1



Malibu's Chris Garcia has been selected to serve as a U.S. delegate to Greece.
Malibu Life: B1

The Malibu Times

April 10, 2014 | www.MalibuTimes.com

Malibu's Award Winning Community Paper | Since 1946

25 Cents | No. 15

Rosenthal, La Monte win re-election

Incumbents beat challengers Patterson, Lyon and Louks to receive second 4-year terms.

By Knowles Adkisson
Managing Editor

Incumbents Laura Rosenthal and Lou La Monte prevailed with room to spare in the Malibu City Council election Tuesday night, each winning a second term on the city's governing body by more than 400 votes.

According to preliminary results released by the city clerk's office, Rosenthal finished first with 1,427 votes, with La Monte close behind at 1,399.

Challengers Andy Lyon and Hamish Patterson, running as a slate, and June Louks, finished with 981, 972 and 522 votes, respectively.

"I am delighted to be able
See Election results, page A10



Julie Ellerton / TMT

City council members and incumbents Laura Rosenthal and Lou La Monte each won a second term on the Malibu City Council in Tuesday's election.

Election Day no joke for local volunteers

Several Malibu residents never miss a day of work at the polls, with some volunteering for local municipal elections beginning as early as 1987.

By Emily Sawicki
The Malibu Times

Walk-in voters in this Tuesday's Malibu City Council election were likely to see familiar faces at their polling station, with many of the elections workers already longtime veterans of Malibu's municipal elections.

William Wishard, III, the election inspector for precinct 14 at Malibu City Hall, has been working for elections in Malibu since 2004 — the year George W. Bush was re-elected to the presidency. In the last 10 years, he's worked for local and county elections, but according to him, his experience is dwarfed by that of his "election team."

"If anything unusual
See Election volunteers, A10

2014 City Council Election results*

Candidate	Votes
Laura Rosenthal	1,427
Lou La Monte	1,399
Andy Lyon	981
Hamish Patterson	972
June Louks	522

*tally as of 10 p.m. Tuesday

Broad Beach sand project clears major hurdles

State Lands Commission, California Coastal Commission deem sand restoration application "complete." Broad Beach homeowners have spent \$7 million to date in attempt to replenish the beach.

By Jimmy Tallal
Special to The Malibu Times

A stressful four-year, \$7-million effort to bring sand to Malibu's

heavily eroded Broad Beach scored two major bureaucratic victories this week after the State Lands Commission (SLC) and California Coastal Commission (CCC) deemed the project application complete.

The coastal development permit (CDP) seeks permission to truck in 600,000 cubic yards of sand from a commercial sand quarry in Moorpark to the once-abundant seaside neighborhood where

114 homeowners have banded together over the past several years in an attempt to restore the beach as part of the Geological Hazard Abatement District (GHAD). Proponents estimate the project will cost \$20 million.

Recognition of the application's completion is not a go-ahead to begin trucking in sand, but proponents see it as a positive indicator of several governmental
See Broad Beach, A7

Restaurant proposal could change parking at Lumberyard

Planning commissioner calls parking projections "10 pounds of potatoes in a 5-pound sack."

By Knowles Adkisson
Managing Editor

Sensing defeat in their request for additional space to open a new restaurant at the Malibu Planning Commission on Monday, the owners of the Malibu Lumberyard shopping center asked for and received a two-month delay on the proposal.

But amid the discussion came promises that parking at the Lumberyard would switch to a valet system to accommodate more traffic should the commission ultimately approve, in a policy to be instituted year-round from 10:30 a.m. to 1 a.m. daily.

Development consultant Don Schmitz, speaking on behalf of the applicant, assured a dubious planning commission that the valet parking would take care of any parking concerns brought on by increased traffic to the center.

"We've observed people walking across to [other centers.] That's what we're going to start managing," Schmitz said. "It's going to be strictly for the Lumberyard."

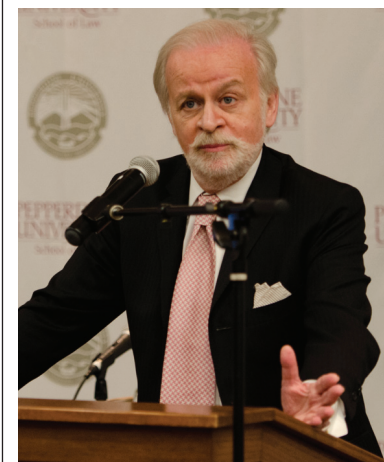
Glimcher Realty Trust, the real estate firm that purchased the shopping center for a reported \$35.5 million last May, seeks an additional 900 square feet of service area to open another restaurant above Cafe Habana on the

second floor of the center.

The center's original 2007 conditional use permit allowed for the operation of two restaurants at the center, totaling 2,000 square feet of service area. At the time the shopping center opened,

the original owners allowed Cafe Habana to expand its outdoor dining service area, making for a total service area of 1,301 square feet. That left only 699 square feet of service area remaining for
See Planning Commission, A5

Ex-CIA Lawyer defends waterboarding to Pepperdine Law Panel



Pepperdine University

John Rizzo

During keynote address and question-and-answer session, John Rizzo maintains waterboarding is not torture.

By Matt Sanderson
Special to The Malibu Times

Pepperdine University law students heard from ex-CIA General Counsel John Rizzo on Friday, the man who helped create and implement the full spectrum of aggressive counterterrorism operations against Al Qaeda following 9/11, and revisited the ethics surround-
See Rizzo, page A5

Spreading his wings



Julie Ellerton / TMT

A red tail hawk, Lancelot, participates in the California Wildlife Center open house for supporters of the program. For more photos, see page B4.

INSIDE

Columnist Pam Linn talks about life, death and book clubs.
Malibu Life, B3
The 2014 Malibu Speakers' Series continues with a lecture by Jesse Billauer.
News Briefs, A3
Malibu Times publisher Arnold York reminisces about past elections and sets rules for the future.
Opinion, A4

Calendar	A2
Classified	B9-11
Crossword	B3
Dining	A6
Opinion	A4
Real Estate	A8-12
Business & Services Directories	B7-11
Legal Notices	B5-6

SUSAN MONUS



Breathtaking Contemporary with Expansive Ocean Views! Offered at \$5,450,000.



310.589.2477 www.susanmonus.com • www.facebook.com/MalibuEstates CallBRE#00827409