

CALENDAR

CALENDAR EVENTS ARE SCHEDULED IN ADVANCE AND MAY BE SUBJECT TO CHANGE. SUBMISSION DEADLINE IS TUESDAY AT 10 A.M. PLEASE E-MAIL SUBMISSIONS TO THE MALIBU TIMES, C/O CALENDAR EDITOR, TO EDITORIAL@MALIBUTIMES.COM, OR FAX TO 310.456.8986. ONLY EVENTS WITH A CONNECTION TO MALIBU WILL BE CONSIDERED.

THURS., MARCH 13

RIBBON CUTTING

Under the Oaks, an early childhood development center, celebrates its grand opening with a ribbon cutting ceremony, at Under the Oaks, 3480 Las Flores Canyon Rd. at 12 p.m. 310.456.9025

FRI., MARCH 14

IMPROV SHOW

The City of Malibu and Young Actors Project host a Youth and Teen Comedy Improv Show, at Malibu City Hall's Civic Theater, 23825 Stuart Ranch Rd. at 7 p.m. \$7. 310.317.1364

SPEAKER SERIES

Dr. Michael Guillen speaks about the craziness of the universe with a lecture, "The Crazy Life," at Malibu Presbyterian Church, 3324 Malibu Canyon Rd. at 7 p.m. 310.456.1611

SAT., MARCH 15

GARDENING WORKSHOP

The City of Malibu hosts a smart gardening workshop to learn about organic gardening, landscaping, native plants and more, at Malibu City Hall's Multipurpose Room, 23825 Stuart Ranch Rd. at 9:30 a.m. 310.456.2489

BUTTERFLY PROJECT

Members of the Malibu Monarch Project give out information about butterflies and milk weed sprouts, at Point Dume Village Center Courtyard, 29169 Heathercliff Rd. at 10 a.m. kimmccarthy6@gmail.com

BOOK READING

Andrea Young reads and signs "Finny and the Boy from Horse Mountain," at Bank of Books, 29169 Heathercliff Rd. at 12 p.m. 310.457.5699

BOOK DISCUSSION

Cathy Egner discusses "10 Tips to a Better Meditation," at Bank of Books, 29169 Heathercliff Rd. at 2 p.m. 310.457.5699

EDUCATIONAL WALK

Discover how local Chumash used indigenous natural resources to create a sustainable way of life, at Temescal Gateway Park, 15601 W. Sunset Blvd., Pacific Palisades, at 3 p.m. 310.858.7272 ext. 131

ART EXHIBITION

Art Space Malibu presents Malibu Artists Unite with an exhibition featuring new artists and works, at Art Space Malibu, 3728 Cross Creek Rd. at 7:30 p.m. 310.650.9642

SUN., MARCH 16

DEMOCRATIC CLUB

The Malibu Democratic Club will honor Congressman Henry Waxman at its annual meeting, at Point Dume Park Clubhouse, 29500 Heathercliff Rd. at 10 a.m. 310.456.1242

SPECIAL LECTURE

Astronomer Dr. Hugh Ross gives a talk, "Science and the Bible: Enemies or Allies?" at 15905 W. Sunset Blvd. at 10 a.m. 310.459.2358

GO GREEN!

Celebrate St. Patrick's Day with family-friendly activities that teach people how to be green at home, at King Gillette Ranch, 26800 Mulholland Hwy., Calabasas, at 1 p.m. 818.878.0866 ext. 228

STORY TELLING

Tales by the Sea hosts a story telling concert with eight tellers, "Unexpected," Malibu West Swimming Club, 30756 W. Pacific Coast Hwy. at 4 p.m. 310.457.2385

MON., MARCH 17

GOLD HUNT

The City of Malibu Parks and Recreation Department hosts its fourth annual Leprechaun Gold Hunt, at Legacy Park, 23500 Civic Center Way, at 10 a.m. 310.456.2489 ext. 358

CONCERT

Celebrate St. Patrick's Day with the

Malibu Friends of Music's concert and talk, at Montgomery Arts House for Music and Architecture Music Room, 6307 Busch Dr. at 7:30 p.m. \$25. 310.589.0295

TUES., MARCH 18

EDUCATIONAL TALK

Learn about the California poppy with a talk by Jean Rhyme, at Temescal Gateway Park, 15601 W. Sunset Blvd., Pacific Palisades, at 7:30 p.m. 310.858.7272 ext. 131

WED., MARCH 19

MARK PERSSON VISITS THE MALIBU

Rotary Club weekly meeting to talk about what's new at the Malibu Chamber of Commerce, Pepperdine University's Drescher Graduate Campus Learning Center Room, LC 152, 24255 Pacific Coast Hwy. at 11:30 a.m. www.clubrunner.ca/malibu

EVENT SERIES

Larry Jones talks about World War I and the role of Crimea in Ukrainian turmoil, at Malibu United Methodist Church, 30128 Morning View Dr. at 6:45 p.m. 310.457.7505

THURS., MARCH 20

LABYRINTH WALK

Walk to mindfulness, inner peace and well-being with this growth-themed labyrinth walk, at Prince of Peace Church, 5700 Rudnick Ave., Woodland Hills, at 5 p.m. 818.346.6968

FRI., MARCH 21

SPEAKER SERIES

Dr. Michael Guillen speaks about the craziness of the universe with a lecture, "The Crazy Choice," at Malibu Presbyterian Church, 3324 Malibu Canyon Rd. at 7 p.m. 310.456.1611

SAT., MARCH 22

BOOK SIGNING

Shari Cohen reads and signs "In My Zayde's Eyes" during story time for grandpas and grandkids, at Bank of Books, 29169 Heathercliff Rd. at 10:30 a.m. 310.457.5699

COOKING DEMONSTRATION

Join Randy Graham for a cooking demonstration and signing of "So You've Inherited a Vegetarian ... Now What?" at Bank of Books, 29169 Heathercliff Rd. at 2 p.m. 310.457.5699

EDUCATIONAL WALK

Discover how local Chumash have used natural resources to create a sustainable way of life on a one-mile walk, at King Gillette Ranch, 26800 Mulholland Hwy., Calabasas, at 2 p.m. 818.878.0866 ext. 228

FILM SCREENING

The Malibu Film Society screens Rory Kennedy's documentary, "Last Days in Vietnam," at Malibu Screening Room, 24855 Pacific Coast Hwy. at 7:30 p.m. \$15. scott@malibufilmsociety.org

FRI., MARCH 28

FUNDRAISER DINNER

The Malibu Rotary Club hosts a dinner event for the Bonewitz-Jordanou Fundraiser, at Chipotle, 3822 Cross Creek Rd. at 5 p.m. www.clubrunner.ca/malibu

ONGOING

ART EXHIBIT

Philip Vaughan's "Gesture + Structure" is open at the Malibu Lumber Yard Gallery, 3939 Cross Creek Rd. through April 10. 310.317.1918

ART EXHIBIT

Wayne Thiebaud's prints and drawings are on display, at Pepperdine University's Federick R. Weisman Museum of Art, 24255 Pacific Coast Hwy. through March 30. 310.506.4055

MEDITATION CLASS

The Malibu Senior Center offers a meditation class on Wednesdays, at the Malibu Senior Center, 23825 Stuart Ranch Rd., at 12 p.m. \$5. 310.456.2489

ART EXHIBIT

William Laga's "Shadows" exhibition is on display daily with all proceeds to benefit Imagine L.A. at Malibleu Gallery, 21201 Pacific Coast Hwy. through March 22. 310.456.2011

LISTENING POST

Listening sessions are offered by volunteers trained in interpersonal communication skills and co-counseling to provide an opportunity to speak aloud feelings confidentially, at Malibu United Methodist Church, 30128 Morning View Dr. Tuesdays, at 7 p.m. Thursdays and Saturdays, at 2 p.m. 310.457.7505

MOMMY AND ME

Gan Malibu Preschool offers a Mommy and Me class for infants and toddlers on Tuesdays, at 22933 Pacific Coast Hwy. at 9:30 a.m. 310.456.6573

COWBOYS FOR CHRIST

The Cowboys for Christ Malibu chapter meets every weekday morning for prayer and scripture reading outside the Point Dume Post Office, 29160 Heathercliff Rd. at 7 a.m. 310.457.0586



Photo courtesy Nolan Pearson

Local high school student, poet and story teller Nolan Pearson performs as part of Tales by the Sea's concert "Unexpected" on March 16.

RECYCLE EVENT

The City of Malibu conducts a combined recycle event, where residents can drop off used motor oil, water-based paint, electronics and other items for proper recycling, on the third Saturday of even-numbered months, at City Hall, 23825 Stuart Ranch Rd., at 10 a.m. 310.456.2489 ext. 286

ROTARY CLUB

Meets Wednesdays at Pepperdine University's Drescher Graduate Campus Learning Center Room, LC 152, 24255 PCH, at 11:30 a.m. www.clubrunner.ca/malibu

GARDEN CLUB

The Malibu Garden Club meets every month on the first Wednesday, at Point Dume Club House, 29500 Heathercliff Dr., at 7 p.m. 310.457.3860

TOWNSHIP COUNCIL

The Malibu Township Council meets the second Thursday of each month at Malibu City Hall's Zuma Room, 23825 Stuart Ranch Rd., at 7 p.m. malibutownshipcouncil.org

LIONS CLUB

Meets the first and third Wednesdays of the month at Duke's Malibu, 21150 PCH, at 7:30 p.m. malibu-lionsclub.com

OPTIMIST CLUB

The club meets, at Pepperdine's Fireside Room, 24255 PCH, most Thursdays, 7:30 a.m. 310.456.3507

KIWANIS CLUB

Meets second and third Thursdays of the month, at various locations, 7 p.m. 310.589.9266

FARMERS MARKET

Cornucopia Foundation's market takes place on Sundays from 10 a.m. to 3 p.m. at Civic Center parking lot, 23519 Civic Center Way. malibufarmersmarket.net

BOOK DISCUSSION

Malibu book discussion group meets Wednesdays, at Point Dume Clubhouse, 1 p.m. 310.456.6139

ORCHID SOCIETY

The Malibu Orchid Society meets the third Tuesday of the month, at Pacific Palisades Women's Club, 901 Haverford Ave., in Pacific Palisades, at 7 p.m. 310.456.7460

CPR/FIRST AID CLASS

CPR or First Aid classes, at City Hall, 23815 Stuart Ranch Rd., second Wednesday of every month, \$25, pre-registration with Brad Davis required at 310.456.2489 x260.

WOMEN AND CHILDREN BIBLE STUDY

The nondenominational group, Community Bible Study, is studying the book of Hebrews, at Malibu Presbyterian Church, 3324 Malibu Canyon Rd., at 10 a.m. malibu.cbclass.org

PEACE MEDITATION

A weekly "Meditation for Peace" takes place, open to all forms of meditation, Tuesdays at 7 p.m., in the Mayhugh Room at Malibu United Methodist Church, 30128 Morning View Dr. cjbmalibu@gmail.com

MINDFULNESS AND MEDITATION

Relax to the sound of the waves in a friendly, nondenominational setting Thursdays at 7:30 p.m., in Malibu., 310.456.3591

CHURCH SERVICES

Malibu United Methodist Church hosts worship service, Sundays at 10:30 a.m., at Malibu United Methodist Church, 30128 Morning View Dr., at 310.457.7505

CHURCH SERVICES

Our Lady of Malibu services, Saturdays at 5 p.m. and Sundays at 7 a.m., 8:30 a.m. and 11 a.m. at Our Lady of Malibu Church, 3625 Winter Canyon Rd. 310.456.8813

CHURCH SERVICES

Traditional service at 9 a.m., Sunday school at 10:20 a.m. and contemporary service at 11:15 a.m., Sundays at Palisades Lutheran Church, 15905 Sunset Blvd., in the Pacific Palisades. 310.459.2358

AVERI • MALIBU'S RESIDENT PSYCHIC®

Accurate & Astounding

In Person and Telephone Readings By Appointment



Averi Torres

ENERGY MUSE CUSTOM SACRED GEMSTONE JEWELRY AT AVERI.COM

For more than four decades, thousands of people have sought AVERI's guidance and motivation for career and personal excellence. Now you too can join with two recent U.S. Presidents, celebrities and ordinary people with extra ordinary dreams who have been enriched by AVERI's powerful insights for peace, prosperity and good health.

(310) 457-3157

www.averi.com

Visa/MC/AE Accepted

Amy Fisher (leader)

Weight Watchers

Malibu Jewish Center
24855 PCH

Monday Evenings

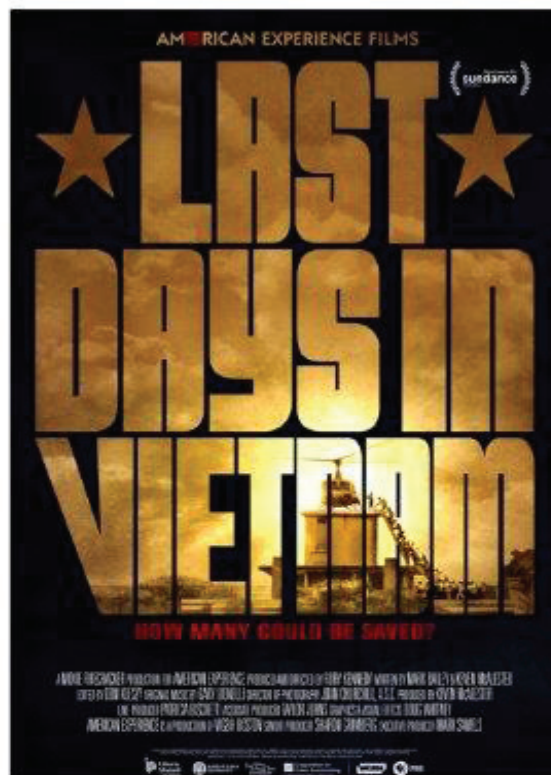
5:30 weigh in

6:00 meeting

For more info:

800.651.6000

Meet award-winning producer/director Rory Kennedy as we present "Last Days of Vietnam," the previously untold story of the soldiers and diplomats who disobeyed orders and risked their careers to save lives during the chaotic fall of Saigon.



Producer/director Rory Kennedy will join us for an audience Q&A after the screening.

ONE SHOW ONLY: SATURDAY, MARCH 22ND - 7:30

MALIBU SCREENING ROOM - 24855 Pacific Coast Hwy
in the Malibu Jewish Center complex 1/2 mile up the coast from Pepperdine

FREE ADMISSION for members of MFS; RSVP to scott@MalibuFilmSociety.org. Join MFS today and get a full year's worth of benefits valued at almost \$1,100 -- all for just \$250!

Non-members can save \$5 per person by making advance-purchase discount reservations www.MalibuFilmSociety.org. Tickets at the door will be \$15 for adults, \$10 for for students.



MALIBU ROTARY CLUB
11:30 P.M.
Wednesdays
Pepperdine University

JOIN US AND SAY,
"I HELPED END
POVERTY."

www.maliburotary.org



FOR INFORMATION CALL
310.589.9266