

# CALENDAR

CALENDAR EVENTS ARE SCHEDULED IN ADVANCE AND MAY BE SUBJECT TO CHANGE. SUBMISSION DEADLINE IS TUESDAY AT 10 A.M. PLEASE E-MAIL SUBMISSIONS TO THE MALIBU TIMES, C/O CALENDAR EDITOR, TO EDITORIAL@MALIBUTIMES.COM, OR FAX TO 310.456.8986. ONLY EVENTS WITH A CONNECTION TO MALIBU WILL BE CONSIDERED.

THURS., JAN. 16

### SINGING COMPETITION

Students from Malibu Middle and High schools will compete in the 2014 Malibu Rotary Club Middle and High School Annual Singing Competition, at Pepperdine University's Stauffer Chapel, 24255 Pacific Coast Hwy. at 6:30 p.m. maliburotary@hotmail.com

SAT., JAN. 18

### EDUCATIONAL HIKE

Explore the effects of fire on plants and animals on a hike to Inspiration Point, at King Gillette Ranch, 26800 Mulholland Hwy., Calabasas, at 9:30 a.m. 818.878.0866 ext. 228

### FAMILY ART DAY

Participate in family art day with projects, crafts and tours of the Weisman Museum, at Pepperdine University's Gregg G. Juarez Palm Courtyard, 24255 Pacific Coast Hwy. at 10 a.m. 310.506.4522

### MUSICAL STORY TIME

Leslie Bixler presents a musical story time, at Bank of Books, 29169 Heathercliff Rd. at 10:30 a.m. 310.457.5699

### STORY PIRATES

A family-friendly sketch comedy show based entirely on stories written by elementary school students, at Pepperdine University's Smothers Theatre, 24255 Pacific Coast Hwy. at 11 a.m. \$10-\$15. 310.506.4522

### HOT RODS

Tony Baker signs "Images of America: Hot Rodding in Ventura County" with hot rods on display, at Bank of Books, 29169 Heathercliff Rd. at 12 p.m. 310.457.5699

### NATURE WALK

Learn about how the local Chumash population used natural resources to create a sustainable way of life, at King Gillette Ranch, 26800 Mulholland Hwy., Calabasas, at 2 p.m. 818.878.0866 ext. 228

### FILM SCREENING

The Malibu Film Society screens two movies: "Blue Jasmine"

and "The Great Beauty," at the Malibu Screening Room, 24855 Pacific Coast Hwy. at 5:15 p.m. \$10. scott@malibufilmsociety.org

MON., JAN. 20

### CRAFT WORKSHOP

Author Pamela Marx and illustrator Debra Vodhanel share their picture book, "A Story of Seven Sisters" and a craft workshop, at the Santa Monica Mountains Interagency Visitor Center at King Gillette Ranch, 26876 Mulholland Hwy. at 10:30 a.m. 805.370.2302

TUES., JAN. 21

### PACKING PARTY

Volunteer to help pack care packages filled with socks, drinks and snacks to send to troops, 29851 Harvester Rd. at 9 a.m. 310.457.4510

### PLAY

"Necessary Targets" by Eve Ensler is based on interviews conducted with women who survived the civil war in the former Yugoslavia, at Pepperdine University's Lindhurst Theatre, 24255 Pacific Coast Hwy. at 7:30 p.m. (through Sat., Jan. 25 and Sat., Jan. 25 at 2 p.m.) \$10-\$15. 310.506.4522

### CONCERT

Tommy Emmanuel with special guest Martin Taylor present a guitar performance, at Pepperdine University's Smothers Theatre, 24255 Pacific Coast Hwy. at 8 p.m. (also Jan. 22) \$10-\$45. 310.506.4522

WED., JAN. 22

### SPECIAL LECTURE

Dr. Michael Ruse presents a lecture on "Is Evolutionism Another Religion?" at Pepperdine University's Elkins Auditorium, 24255 Pacific Coast Hwy. at 4 p.m. drew.billings@pepperdine.edu

THURS., JAN. 23

### MUSICAL PERFORMANCE

"Celtic Nights: The Emigrants Bridge" is a story of Irish emigrants told with music and dance, at Pepperdine University's Smothers Theatre, 24255 Pacific

Coast Hwy. at 8 p.m. \$10-\$40. 310.506.4522

FRI., JAN. 24

### POETRY READING

Local poets will read, at Bank of Books, 29169 Heathercliff Rd. at 7 p.m. 310.457.5699

SAT., JAN. 25

### BOOK SIGNING

Andrea Young signs her young adult novel, "Finny and the Boy from Horse Mountain," at Bank of Books, 29169 Heathercliff Rd. at 12 p.m. 310.457.5699

### BASEBALL GAME

The Pepperdine baseball program will host the 2014 John Scolinos Alumni Game in honor of the coaching legend, at Pepperdine University's Eddy D. Field Stadium, 24255 Pacific Coast Hwy. at 1 p.m. 310.506.4333

### ROCK THE DOCK

Malibu Farm Café hosts dinner and a night of swing, salsa, disco and ballroom dancing, 28128 Pacific Coast Hwy. at 7 p.m. \$15. 760.238.1498

### CONCERT

Pepperdine University Center for the Arts presents a concert by Grammy-winning vocalist Mavis Staples, at Pepperdine University's Smothers Theatre, at 8 p.m. \$10-\$45. 310.506.4522

WED., JAN. 29

### SPIRIT OF UGANDA

Dancers, singers, drummers and musicians come together to bring a message of hope with a concert performance, at Pepperdine University's Smothers Theatre, 24255 Pacific Coast Hwy. at 7:30 p.m. \$10-\$35. 310.506.4522

THURS., JAN. 30

### LECTURE

David Hazony presents a special lecture on "The Ten Commandments: How Our Most Ancient Moral Text Can Renew Modern Life," at Pepperdine University's Elkins Auditorium, 24255 Pacific Coast Hwy. at



Photo courtesy of Pepperdine University Athletics

The Pepperdine baseball program hosts the 2014 John Scolinos Alumni Game Jan. 26.

4 p.m. drew.billings@pepperdine.edu

### ONGOING

#### KINDERGARTEN ROUND-UP

Preregistration and RSVPs have opened for Juan Cabrillo's Annual Kindergarten Round-up taking place on Feb. 26 at Juan Cabrillo Elementary School, 30237 Morning View Dr. 310.457.0360 ext. 60-131

#### CERT CLASSES

The Community Emergency Response Team program offers classes Wednesdays through Feb. 26 at 6 p.m. at Malibu City Hall, 23825 Stuart Ranch Rd. 310.456.2489 ext. 260

#### DANCE LESSONS

Learn how to ballroom, salsa, swing and country western dance on Mondays through Feb. 3, at Malibu Bluffs Park, 24250 Pacific Coast Hwy. \$18. 760.238.1498

#### ART EXHIBIT

Graffiti artist, Mr. Brainwash, has pieces on display, until Jan. 31, at Wall Street Malibu Pop-up, 3832 Cross Creek Rd., 310.456.2809

#### ART EXHIBIT

Wayne Thiebaud's prints and drawings are on display, at Pepperdine University's Frederick R. Weisman Museum of Art, 24255 Pacific Coast Hwy. through March 30. 310.506.4055

#### MEDITATION CLASS

The Malibu Senior Center offers a meditation class on Wednesdays, at the Malibu Senior Center, 23825 Stuart Ranch Rd., at 12 p.m. \$5. 310.456.2489

#### LISTENING POST

Listening sessions are offered by volunteers trained in interpersonal communication skills and co-counseling to provide an opportunity to speak aloud feelings confidentially, at Malibu United Methodist Church, 30128 Morning View Dr. Tuesdays, at 7 p.m. Thursdays and Saturdays, at 2 p.m. 310.457.7505

#### RECYCLE EVENT

The City of Malibu conducts a combined recycle event, where residents can drop off used motor oil, water-based paint, electronics and other items for proper recycling, on the third Saturday of even-numbered months, at City Hall, 23825 Stuart Ranch Rd., at 10 a.m. 310.456.2489 ext. 286

#### ROTARY CLUB

Meets Wednesdays at Pepperdine University's Drescher Graduate Campus Learning Center Room, LC 152, 24255 PCH, at 11:30 a.m. maliburotary.org

#### GARDEN CLUB

The Malibu Garden Club meets every month on the first Wednesday, at Point Dume Club House, 29500 Heathercliff Dr., at 7 p.m. 310.457.3860

#### TOWNSHIP COUNCIL

The Malibu Township Council meets the second Thursday of each month at Malibu City Hall's Zuma Room, 23825 Stuart Ranch Rd., at 7 p.m. malibutownship-council.org

#### LIONS CLUB

Meets the first and third Wednesdays of the month at Duke's Malibu, 21150 PCH, at 7:30 p.m. malibulionsclub.com

#### OPTIMIST CLUB

The club meets, at Pepperdine's Fireside Room, 24255 PCH, most Thursdays, 7:30 a.m. 310.456.3507

#### KIWANIS CLUB

Meets second and third Thursdays of the month, at various locations, 7 p.m. 310.589.9266

#### FARMERS MARKET

Cornucopia Foundation's market takes place on Sundays from 10 a.m. to 3 p.m. at Civic Center parking lot, 23519 Civic Center Way. malibufarmersmarket.net

#### BOOK DISCUSSION

Malibu book discussion group meets Wednesdays, at Point Dume Clubhouse, 1 p.m. 310.456.6139

#### ORCHID SOCIETY

The Malibu Orchid Society meets the third Tuesday of the month, at Pacific Palisades Women's Club, 901 Haverford Ave., in Pacific Palisades, at 7 p.m. 310.456.7460

#### CPR/FIRST AID CLASS

CPR or First Aid classes, at City Hall, 23815 Stuart Ranch Rd., second Wednesday of every month, \$25, pre-registration with Brad Davis required at 310.456.2489 x260.

#### WOMEN AND CHILDREN BIBLE STUDY

The nondenominational group, Community Bible Study, is studying the book of Hebrews, at Malibu Presbyterian Church, 3324 Malibu Canyon Rd., at 10 a.m. malibu.cbsclass.org

#### PEACE MEDITATION

A weekly "Meditation for Peace" takes place, open to all forms of meditation, Tuesdays at 7 p.m., in the Mayhugh Room at Malibu United Methodist Church, 30128 Morning View Dr. cjbmalibu@gmail.com

#### MEDITATION GROUP

Open meditation group near Webb Way every Thursday evening, in Malibu., at 7:30 p.m. 310.456.3591

#### CHURCH SERVICES

Malibu United Methodist Church hosts worship service, Sundays at 10:30 a.m., at Malibu United Methodist Church, 30128 Morning View Dr., at 310.457.7505

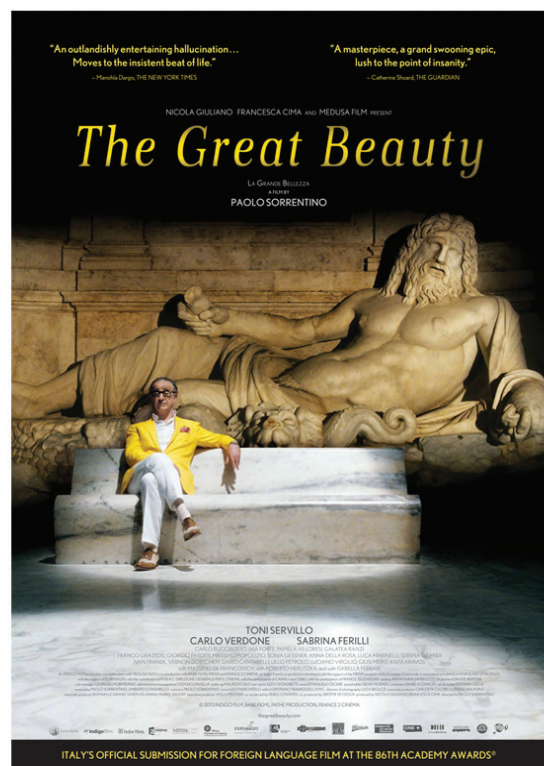
#### CHURCH SERVICES

Our Lady of Malibu services, Saturdays at 5 p.m. and Sundays at 7 a.m., 8:30 a.m. and 11 a.m. at Our Lady of Malibu Church, 3625 Winter Canyon Rd. 310.456.8813

#### CHURCH SERVICES

Traditional service at 9 a.m., Sunday school at 10:20 a.m. and contemporary service at 11:15 a.m., Sundays at Palisades Lutheran Church, 15905 Sunset Blvd., in the Pacific Palisades. 310.459.2358

**MALIBU FILM SOCIETY** Two Golden Globe®-winning films come to Malibu this Saturday as our "Awards Season Screenings" continue with "Blue Jasmine" (featuring Best Actress Cate Blanchett) and this year's Best Foreign Language Film, "The Great Beauty."



5:15 – SATURDAY, JANUARY 18<sup>TH</sup> – 7:30

**MALIBU SCREENING ROOM - 24855 Pacific Coast Highway**  
in the Malibu Jewish Center complex ½ mile up the coast from Pepperdine University

**FREE ADMISSION** for all members of MFS along with AMPAS, HFPA, film industry guilds and their guests. RSVP to [scott@MalibuFilmSociety.org](mailto:scott@MalibuFilmSociety.org), noting your name, membership/guild information, which show(s) you wish to attend, and the number of seats requested.

**NON-MEMBERS** can save \$5 by purchasing tickets in advance at [www.MalibuFilmSociety.org](http://www.MalibuFilmSociety.org).



### AVERI • MALIBU'S RESIDENT PSYCHIC®

Accurate & Astounding  
In Person and Telephone Readings By Appointment



Averi Torres

For more than four decades, thousands of people have sought AVERI's guidance and motivation for career and personal excellence. Now you too can join with two recent U.S. Presidents, celebrities and ordinary people with extra ordinary dreams who have been enriched by AVERI's powerful insights for peace, prosperity and good health.

(310) 457-3157

[www.averi.com](http://www.averi.com)

Visa/MC/AE Accepted

ENERGY MUSE CUSTOM SACRED GEMSTONE JEWELRY AT AVERI.COM

**MALIBU ROTARY CLUB**  
11:30 P.M.  
Wednesdays  
Pepperdine University

**FUN, FELLOWSHIP,  
SERVICE  
WORLDWIDE.**

[www.maliburotary.org](http://www.maliburotary.org)



FOR INFORMATION CALL  
310.589.9266